

# Installation Manual

## AS-3204 ARNOTT REMANUFACTURED FRONT RIGHT AIR STRUT LAND ROVER RANGE ROVER (L494)



Congratulations on your purchase of an Arnott® air suspension product. We at Arnott Incorporated are proud to offer a high quality product at the industry's most competitive pricing. Thank you for your confidence in us and our product.

Proper installation is essential to experience and appreciate the benefits of this system. Please take a moment to review these installation instructions before you begin to install these components on your vehicle. The removal and installation of air suspension products should only be performed by a fully qualified, ASE Certified, professional.

It is equally important to be aware of all necessary safety measures while installing your new Air Suspension System. This includes proper lifting and immobilizing of the vehicle and isolation of any stored energy to prevent personal injury or property damage.

### "Engineered to Ride, Built to Last®"



**WARNING:** The air suspension system is under pressure (up to 10 bar, or 150 lbf/in). Verify pressure has been relieved and disconnect power to the air suspension system prior to disassembly. Do not allow dirt or grease to enter the system. Always wear standard hand, ear, and eye protection when servicing the air suspension system.

Arnott® is committed to the quality of its products. If you have a question or problem with any Arnott product, please contact Arnott by calling **800-251-8993** during normal business hours or email [techassistance@arnottinc.com](mailto:techassistance@arnottinc.com). (In the EU please call +31 (0)73 7850 580 or email [info@arnotteurope.com](mailto:info@arnotteurope.com))

## GENERAL INFORMATION:

*Reading this manual signifies your agreement to the terms of the general release, waiver of liability, and hold harmless agreement, the full text of which is available at [www.arnottinc.com](http://www.arnottinc.com).*

- Not to be stored below 5°F (-15°C) or above 122°F (50°C).
- Avoid damage to air lines and cables.
- Removal and installation is only to be performed by fully qualified personnel.
- Use car manufacturer's diagnostic software.

**CAUTION:** *Damage to the vehicle and air suspension system can be incurred if work is carried out in a manner other than specified in the instructions or in a different sequence.*



*To avoid the possibility of short circuits while working with electric components consult your owner's manual on how to disconnect your battery.*



*Consult your vehicle owner's manual, service manual, or car dealer for the correct jacking points on your vehicle and for additional care, safety and maintenance instructions. Under no circumstances should any work be completed underneath the vehicle if it is not adequately supported, as serious injuries and death can occur.*

## AIR STRUT REMOVAL

1. SET STEERING TO STRAIGHT AHEAD.
2. RAISE VEHICLE.
3. REMOVE THE APPLICABLE FRONT WHEEL. (FIGURE 1)



FIGURE 1

4. DISCONNECT THE ELECTRICAL CONNECTION FROM THE TOP OF THE STRUT BY PRESSING IN ON THE TWO TABS AND PULLING UPWARDS. (FIGURE 2)



FIGURE 2

5. LOOSEN AND REMOVE THE AIR LINE FROM THE TOP OF THE STRUT. (FIGURES 3, 4)



FIGURE 3



FIGURE 4

6. REMOVE THE AIR LINE FITTING. TO DO SO, SPREAD THE COLLET OPEN AND THE REMAINING FITTING WILL SLIDE OFF OF THE AIR HOSE. (FIGURES 5, 6, 7, 8)

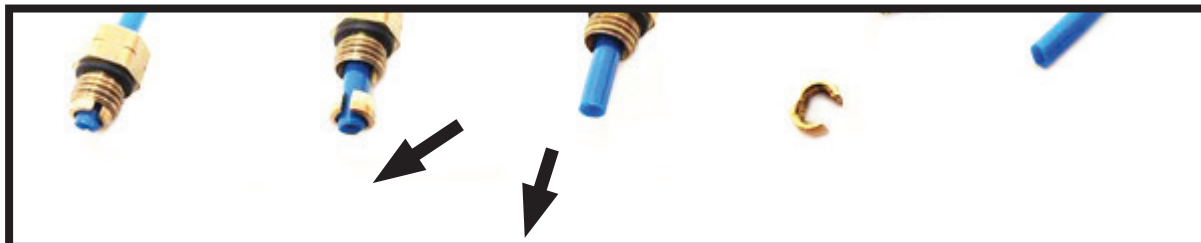


FIGURE 5



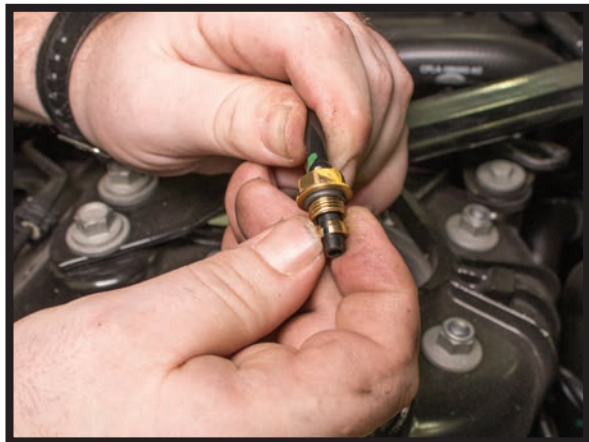


FIGURE 6



FIGURE 7



FIGURE 8

7. LOOSEN AND REMOVE THE TOP MOUNTING NUTS. (FIGURES 9, 10)



FIGURE 9

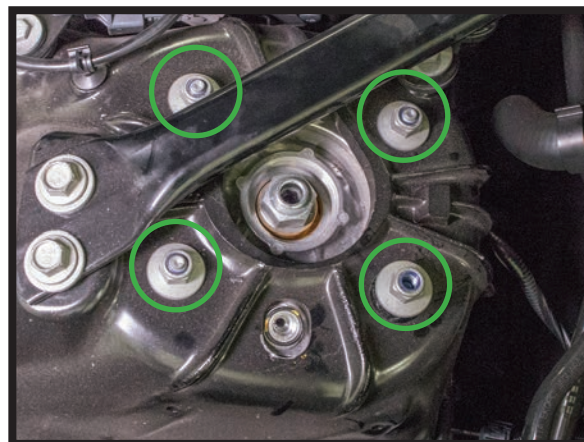


FIGURE 10

8. LOOSEN AND REMOVE THE SENSOR WIRE AND BRAKE LINE BRACKET. (FIGURES 11, 12, 13)



FIGURE 11



FIGURE 12

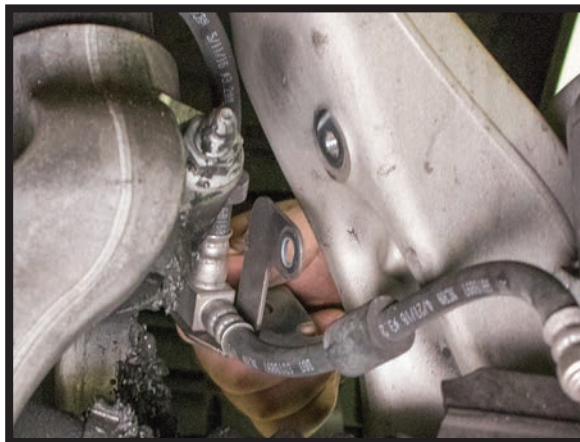


FIGURE 13

9. LOCATE AND REMOVE THE UPPER CONTROL ARM BALL JOINT NUT. SEPERATE THE BALL JOINT FROM THE SPINDLE ASSEMBLY. (FIGURES 14, 15, 16)



FIGURE 14



FIGURE 15





FIGURE 16

10. LOOSEN AND REMOVE THE LOWER STRUT MOUNTING BOLT. (FIGURE 17)



FIGURE 17

11. REMOVE THE SENSOR WIRE BRACKET AND SEPERATE THE END LINK FROM THE LOWER STRUT CLEVIS. (FIGURES 18, 19, 20)



FIGURE 18

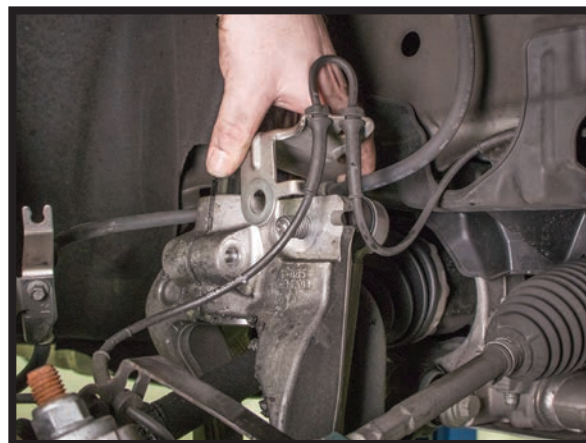


FIGURE 19



FIGURE 20

12. LOOSEN THE STRUT CLEVIS. (FIGURE 21)



FIGURE 21

13. PULL THE SPINDLE ASSEMBLY OUTWARD AND REMOVE THE STRUT. (FIGURES 22, 23)



FIGURE 22



FIGURE 23

14. REMOVAL COMPLETE.



## AIR STRUT INSTALLATION



*Tighten all nuts and bolts to manufacturer's specifications during the installation process.*



*Do not remove the air fitting from the air strut. Doing so may cause damage and/or void warranty. Remove the white shipping pin from the new air fitting and insert the air line until fully seated.*

1. INSTALL THE STRUT INTO THE VEHICLE. (FIGURE 24)



FIGURE 24

2. INSTALL THE LOWER STRUT MOUNTING BOLT. (FIGURE 25)

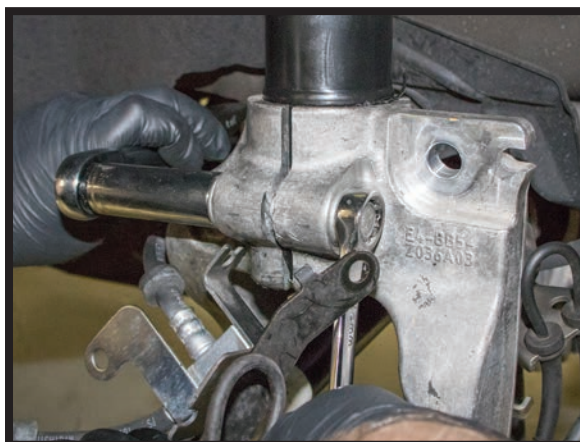


FIGURE 25



3. REINSTALL THE UPPER CONTROL ARM TO THE SPINDLE ASSEMBLY AND TIGHTEN TO MANUFACTURER'S SPECIFICATIONS. (FIGURES 26, 27)



FIGURE 26



FIGURE 27

4. REINSTALL THE SENSOR WIRE BRACKET AND REATTACH THE END LINK TO THE LOWER STRUT CLEVIS. (FIGURES 28, 29, 30)

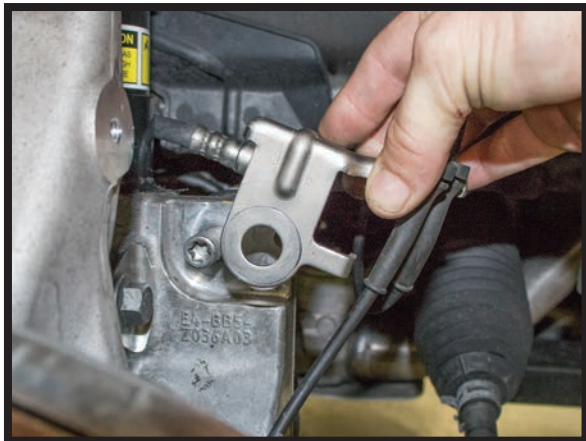


FIGURE 28



FIGURE 29



FIGURE 30

5. RETIGHTEN THE STRUT CLEVIS TO MANUFACTURER'S SPECIFICATIONS. (FIGURE 31)



FIGURE 31

6. REINSTALL THE SENSOR WIRE AND BRAKE LINE BRACKET. (FIGURES 32, 33)

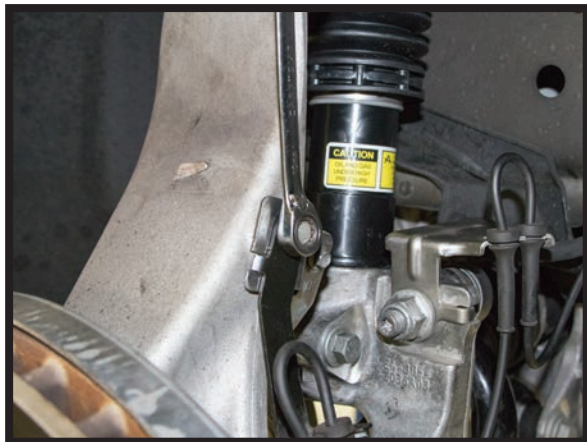


FIGURE 32



FIGURE 33

7. REINSTALL THE TOP STRUT MOUNTING BOLTS AND TIGHTEN TO MANUFACTURER'S SPECIFICATIONS. (FIGURE 34)



FIGURE 34

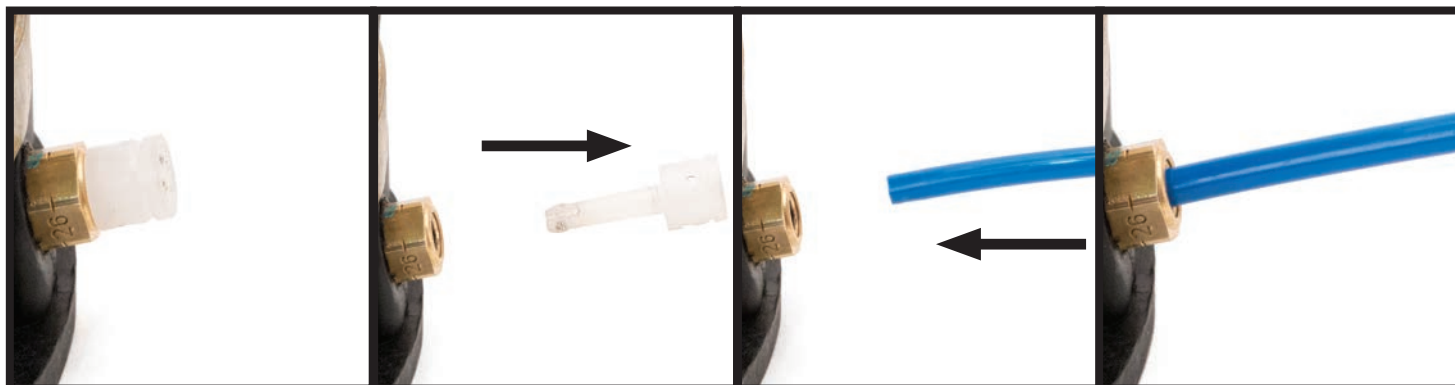


8. REMOVE THE WHITE PLASTIC SHIPPING PIN FROM THE AIR LINE FITTING AND DISCARD. (FIGURE 35)



FIGURE 35

9. INSTALL THE AIR LINE INTO THE AIR LINE FITTING. (FIGURES 36, 37, 38)



AS RECEIVED

REMOVE & DISPOSE  
OF SHIPPING PIN

INSERT THE AIR LINE  
INTO THE FITTING AND  
PRESS UNTIL FIRMLY  
SEATED

WITH THE AIR LINE INSERTED,  
PULL AIR LINE OUTWARD TO  
LOCK AND ENSURE A SECURE  
CONNECTION

FIGURE 36



FIGURE 37

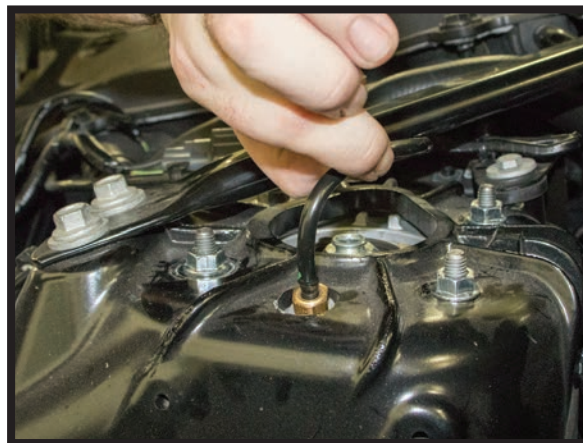


FIGURE 38

10. REINSTALL THE ELECTRICAL CONNECTION, ENSURING THE PLUG IS ORIENTED APPROPRIATELY TO THE ELECTRICAL TERMINALS WITHIN THE STRUT. (FIGURES 39, 40)



FIGURE 39



FIGURE 40

11. REINSTALL THE WHEEL.
12. INSTALLATION COMPLETE.