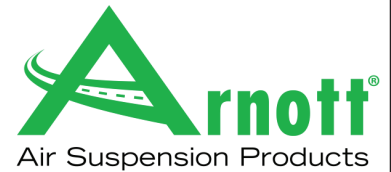


Installation Manual

AS-2892
ARNOTT FRONT RIGHT AIR STRUT
BENTLEY CONTINENTAL GT
BENTLEY FLYING SPUR
VOLKSWAGEN PHAETON



Congratulations on your purchase of an Arnott® air suspension product. We at Arnott Incorporated are proud to offer a high quality product at the industry's most competitive pricing. Thank you for your confidence in us and our product.

Proper installation is essential to experience and appreciate the benefits of this system. Please take a moment to review these installation instructions before you begin to install these components on your vehicle. The removal and installation of air suspension products should only be performed by a fully qualified, ASE Certified, professional.

It is equally important to be aware of all necessary safety measures while installing your new Air Suspension System. This includes proper lifting and immobilizing of the vehicle and isolation of any stored energy to prevent personal injury or property damage.

"Engineered to Ride, Built to Last®"



WARNING: *The air suspension system is under pressure (up to 10 bar, or 150 lbf/in). Verify pressure has been relieved and disconnect power to the air suspension system prior to disassembly. Do not allow dirt or grease to enter the system. Always wear standard hand, ear, and eye protection when servicing the air suspension system.*

Arnott® is committed to the quality of its products. If you have a question or problem with any Arnott product, please contact Arnott by calling **800-251-8993** during normal business hours or email techassistance@arnottinc.com.

GENERAL INFORMATION:

Reading this manual signifies your agreement to the terms of the general release, waiver of liability, and hold harmless agreement, the full text of which is available at www.arnottinc.com.

- Not to be stored below 5°F (-15°C) or above 122°F (50°C).
- Avoid damage to air lines and cables.
- Removal and installation is only to be performed by fully qualified personnel.
- Use car manufacturer's diagnostic software.

CAUTION: *Damage to the vehicle and air suspension system can be incurred if work is carried out in a manner other than specified in the instructions or in a different sequence.*



To avoid the possibility of short circuits while working with electric components consult your owner's manual on how to disconnect your battery.



Consult your vehicle owner's manual, service manual, or car dealer for the correct jacking points on your vehicle and for additional care, safety and maintenance instructions. Under no circumstances should any work be completed underneath the vehicle if it is not adequately supported, as serious injuries and death can occur.

AIR STRUT REMOVAL

1. SET STEERING TO STRAIGHT AHEAD.
2. RAISE VEHICLE.
3. REMOVE FRONT WHEEL. (FIGURE 1)



FIGURE 1

4. LOOSEN AND REMOVE AIR LINE. REMOVE THE AIR LINE FITTING FROM THE AIR HOSE AND DISCARD. (FIGURE 2) SEE REMOVAL STEPS ON PAGE 7.



FIGURE 2

5. LOOSEN AND REMOVE THE TOP PINCH NUT/BOLT FROM THE SPINDLE/BALL JOINT ASSEMBLY. (FIGURE 3, 4)



FIGURE 3



FIGURE 4

6. LOOSEN THE LOWER STRUT MOUNTING NUT/BOLT. (FIGURE 5)



FIGURE 5

7. RAISE THE HOOD AND DISCONNECT THE AIR STRUT'S ELECTRICAL PLUG. (FIGURE 6)



FIGURE 6

8. REMOVE THE WEATHER STRIP AND PLASTIC COVER TO ACCESS THE THREE (3) TOP MOUNTING BOLTS. (FIGURE 7, 8)



FIGURE 7

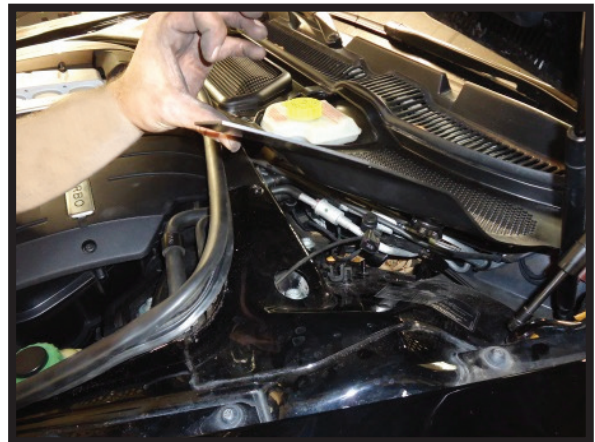


FIGURE 8

9. LOOSEN AND REMOVE THE THREE (3) TOP MOUNTING BOLTS. (FIGURE 9, 10)



FIGURE 9

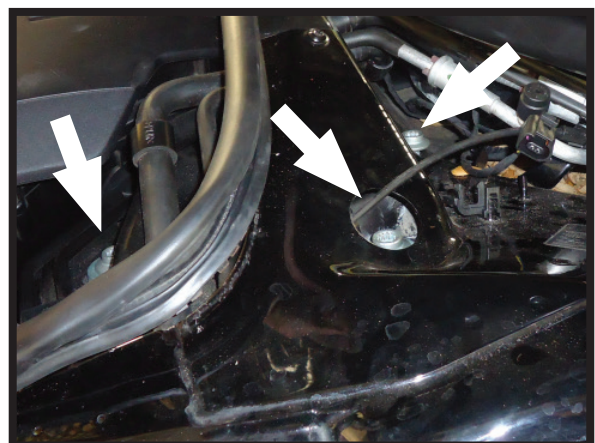


FIGURE 10

10. REMOVE THE LOWER AIR STRUT MOUNTING BOLT. (FIGURE 11)



FIGURE 11

11. REMOVE THE AIR STRUT ASSEMBLY FROM THE VEHICLE. (FIGURE 12)



FIGURE 12

12. REMOVE THE FOUR (4) TOP NUTS TO SEPARATE THE AIR STRUT FROM THE TOP MOUNT. (FIGURE 13, 14)

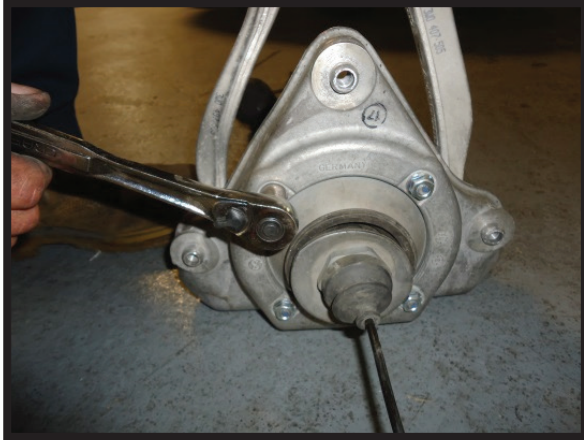


FIGURE 13



FIGURE 14

13. REMOVAL COMPLETE.

AIR STRUT INSTALLATION



Tighten all nuts and bolts to manufacturer's specifications during the installation process.



Do not remove the air fitting from the air strut. Doing so may cause damage and/or void warranty. Remove the white shipping pin from the new air fitting and insert the air line until fully seated.

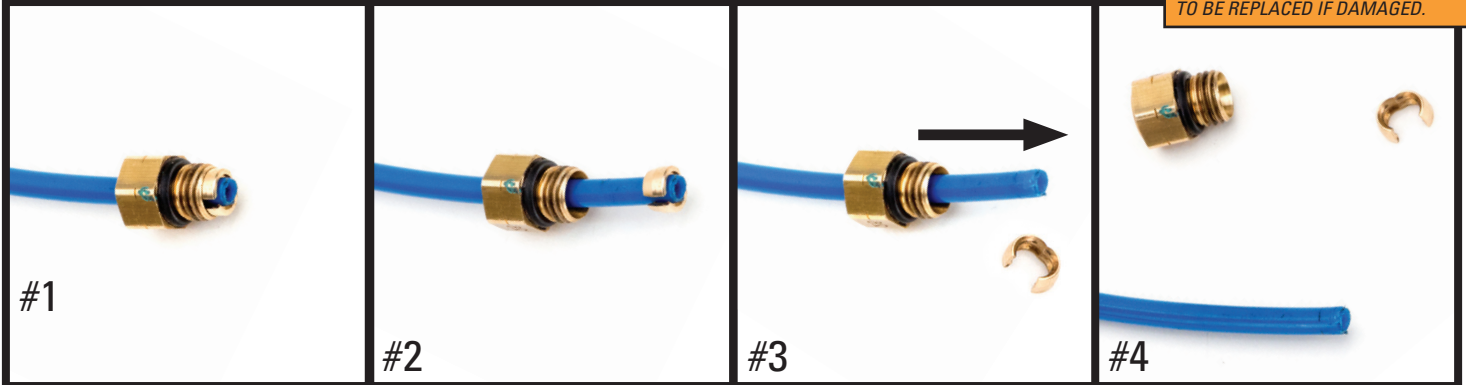
1. INSTALLATION IS IN THE REVERSE ORDER OF AIR STRUT REMOVAL.

REMOVAL



Prior to inserting the existing air line into the new air fitting you will need to remove the old original equipment air line fitting.

NOTE: SCRATCHES AND/OR DEEP CUTS IN THE AIR LINE CAN RESULT IN POSSIBLE LEAKS. INSPECT THE AIR LINE BEFORE INSERTION. AIR LINE NEEDS TO BE REPLACED IF DAMAGED.



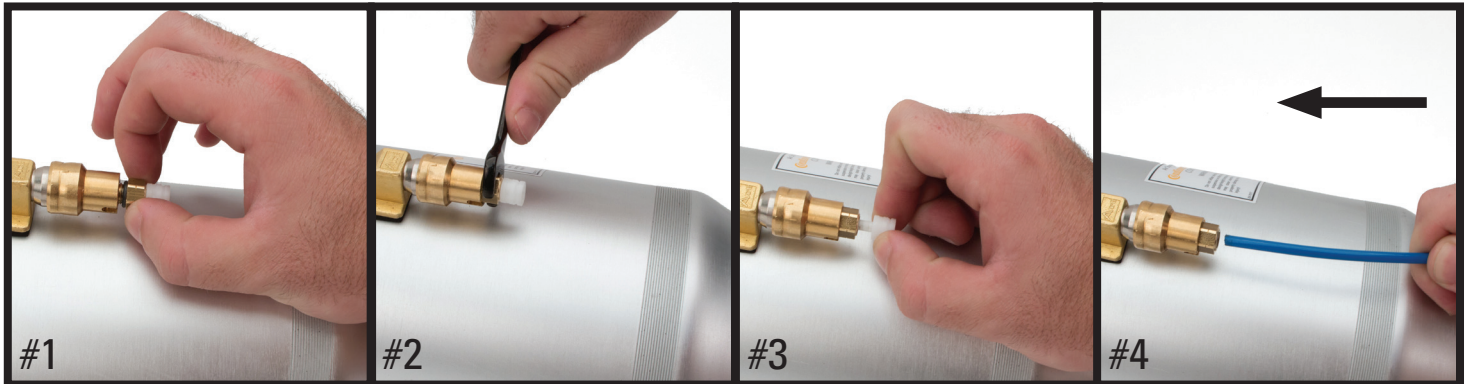
OE AIR LINE FITTING

SLIDE THE THREADED PORTION UP THE LINE AND SPREAD THE COLLET OPEN TO REMOVE

SLIDE THE AIR FITTING OFF OF THE AIR LINE

AIR LINE IS READY FOR INSTALLATION

INSTALLATION - USING THE NEW AIR LINE FITTING PROVIDED IN THE KIT

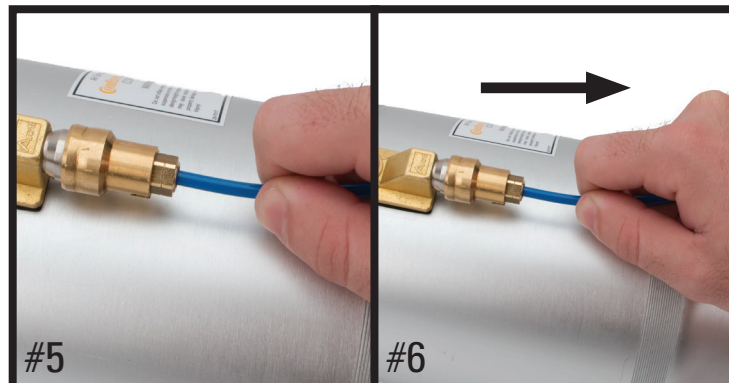


THREAD THE INCLUDED AIR LINE FITTING INTO THE VALVE

TIGHTEN FITTING TO APPROX. 2NM (18 IN-LBS/1.5 FT-LBS)

REMOVE AND DISPOSE OF THE SHIPPING PIN

INSERT AIR LINE INTO THE AIR LINE FITTING UNTIL IT STOPS



AIR LINE INSERTED

GENTLY PULL ON AIR LINE TO CONFIRM IT IS FULLY SECURED BY THE AIR LINE FITTING