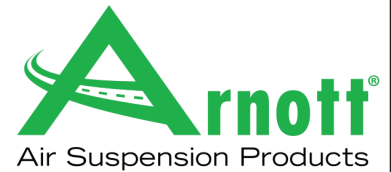


# Installation Manual

P-2793  
AIR SUSPENSION COMPRESSOR  
CADILLAC ESCALADE ESV  
(GMT-400/GMT-900)



Congratulations on your purchase of an Arnett® air suspension product. We at Arnett Incorporated are proud to offer a high quality product at the industry's most competitive pricing. Thank you for your confidence in us and our product.

Proper installation is essential to experience and appreciate the benefits of this system. Please take a moment to review these installation instructions before you begin to install these components on your vehicle. The removal and installation of air suspension products should only be performed by a fully qualified, ASE Certified, professional.

It is equally important to be aware of all necessary safety measures while installing your new Air Suspension System. This includes proper lifting and immobilizing of the vehicle and isolation of any stored energy to prevent personal injury or property damage.

**"Engineered to Ride, Built to Last®"**



**WARNING:** *The air suspension system is under pressure (up to 10 bar, or 150 lbf/in). Verify pressure has been relieved and disconnect power to the air suspension system prior to disassembly. Do not allow dirt or grease to enter the system. Always wear standard hand, ear, and eye protection when servicing the air suspension system.*

Arnett® is committed to the quality of its products. If you have a question or problem with any Arnett product, please contact Arnett by calling **800-251-8993** during normal business hours or email [techassistance@arnottinc.com](mailto:techassistance@arnottinc.com).

## GENERAL INFORMATION:

Reading this manual signifies your agreement to the terms of the general release, waiver of liability, and hold harmless agreement, the full text of which is available at [www.arnottinc.com](http://www.arnottinc.com).

- Not to be stored below 5°F (-15°C) or above 122°F (50°C).
- Avoid damage to air lines and cables.
- Removal and installation is only to be performed by fully qualified personnel.
- Use car manufacturer's diagnostic software.

**CAUTION:** Damage to the vehicle and air suspension system can be incurred if work is carried out in a manner other than specified in the instructions or in a different sequence.



To avoid the possibility of short circuits while working with electric components consult your owner's manual on how to disconnect your battery.



Consult your vehicle owner's manual, service manual, or car dealer for the correct jacking points on your vehicle and for additional care, safety and maintenance instructions. Under no circumstances should any work be completed underneath the vehicle if it is not adequately supported, as serious injuries and death can occur.

## AIR SUSPENSION COMPRESSOR REMOVAL

1. SET STEERING TO STRAIGHT.
2. RAISE VEHICLE.
3. LOCATE AND REMOVE THE LEFT REAR TIRE. (FIGURE 1)



FIGURE 1

4. LOCATE AND REMOVE THE SPARE TIRE. (FIGURE 2)

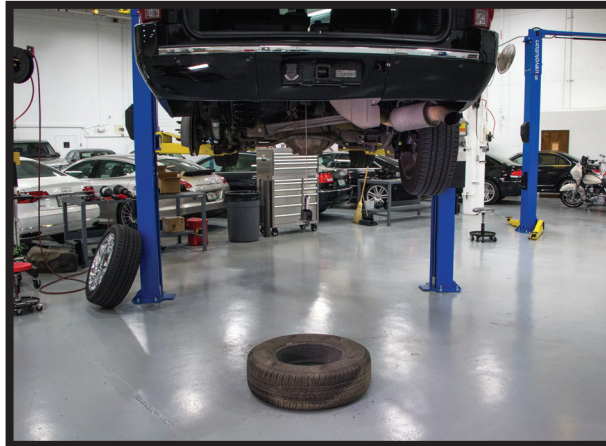


FIGURE 2

5. LOCATE AND REMOVE THE AIR LINE HOSE FROM THE LEFT REAR AIR SHOCK. (FIGURE 3)



FIGURE 3

6. LOCATE AND REMOVE THE ELECTRICAL CONNECTOR FROM THE LEFT REAR AIR SHOCK. (FIGURE 4)

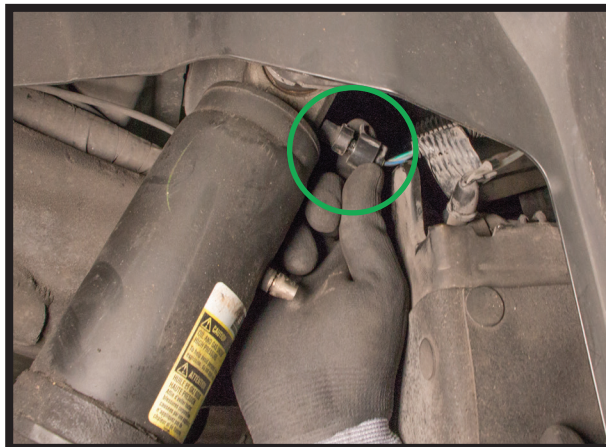


FIGURE 4

7. LOCATE AND DISCONNECT THE ELECTRICAL CONNECTOR FROM THE TOP OF THE COMPRESSOR. (FIGURE 5)

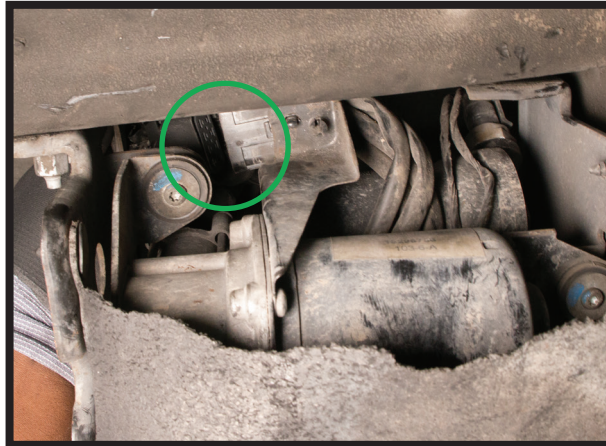


FIGURE 5

8. LOCATE AND DISCONNECT THE AIR HOSE FROM THE COMPRESSOR. (FIGURES 6, 7)



FIGURES 6, 7

9. LOCATE AND LOOSEN THE MOUNTING NUT FROM INSIDE OF THE FRAME RAIL. (FIGURE 8)

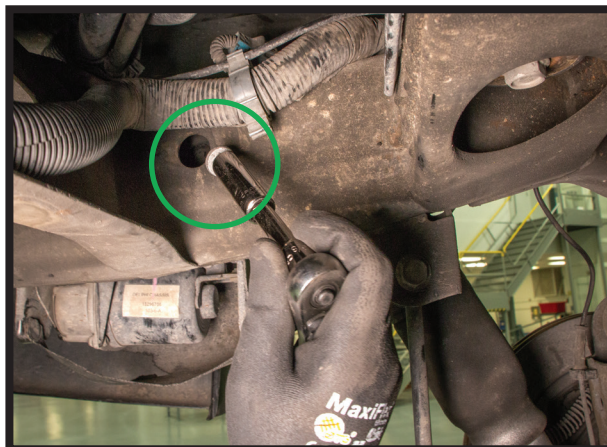
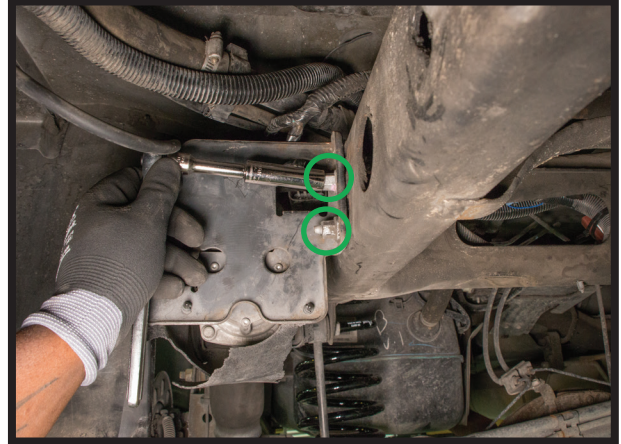
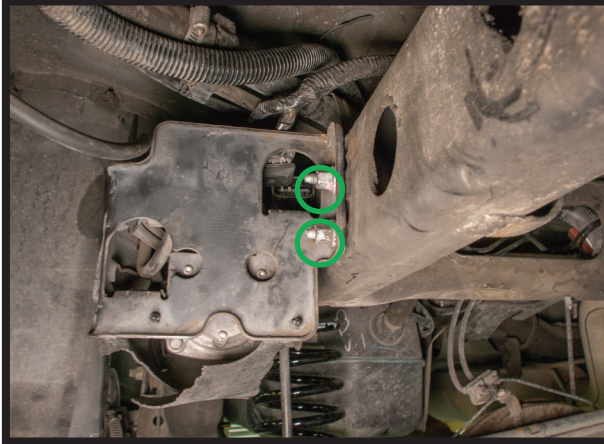


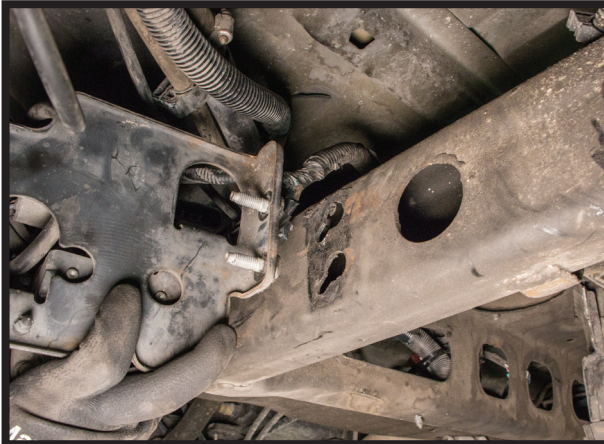
FIGURE 8

10. LOCATE AND LOOSEN THE MOUNTING NUTS ON THE OUTSIDE OF THE FRAME RAIL. (FIGURES 9, 10)



FIGURES 9, 10

11. SLIDE THE AIR COMPRESSOR REARWARD TO CLEAR THE FRAME SLOTS. (FIGURES 11, 12)



FIGURES 11, 12

12. REMOVE THE AIR INTAKE BOX FROM THE VEHICLE. IT IS LOCATED BEHIND THE FUEL FILLER DOOR. (FIGURE 13)



FIGURE 13

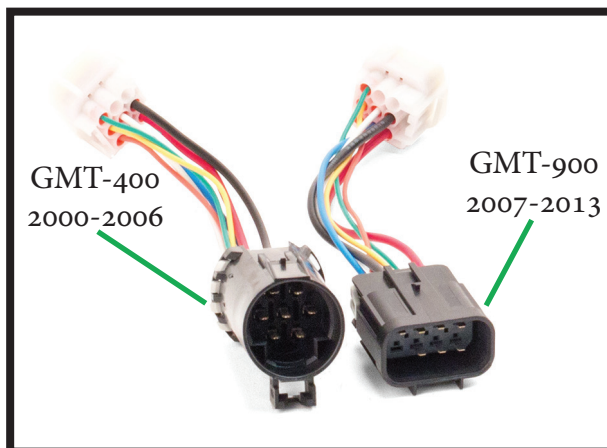
## AIR SUSPENSION COMPRESSOR INSTALLATION



*Tighten all nuts and bolts to manufacturer's specifications during the installation process.*

1. INSTALLATION IS IN REVERSE ORDER OF AIR SUSPENSION COMPRESSOR REMOVAL.

**NOTE:** BE SURE TO USE THE CORRECT WIRE HARNESS FOR YOUR CHASSIS/MODEL YEAR.





## WARNING



### **CRACKED AIR SPRINGS MUST BE CHANGED TO VALIDATE THE WARRANTY ON THE COMPRESSOR**

PLEASE READ ADDITIONAL WARRANTY INFORMATION ON THE BACK OF YOUR INVOICE



### **PROPER PROCEDURE FOR ASSESSING YOUR AIR SPRINGS CONDITION:**

1. TURN OFF AIR SUSPENSION SWITCH IF EQUIPPED.
2. REFER TO OWNER'S MANUAL FOR PROPER LIFTING TECHNIQUES AND JACKING POINTS.
3. RAISE THE VEHICLE.
4. INSPECT AIR SPRINGS FOR ANY TYPE OF CRACKS OR EXCESSIVE WEAR. CRACKS IN AIR SPRINGS ARE EVIDENT IF THEY ARE LEAKING. THIS WILL CAUSE THE COMPRESSOR TO OVERHEAT FROM CONTINUOUS OPERATION.

Arnott<sup>®</sup> is committed to the quality of its products. If you have a question or problem with any Arnott product, please contact Arnott by calling [800-251-8993](tel:800-251-8993) during normal business hours or email [techassistance@arnottinc.com](mailto:techassistance@arnottinc.com)